



EASE OF DOING BUSINESS CENTRE
AT SALDANHA BAY INDUSTRIAL DEVELOPMENT ZONE

WELCOME

The Saldanha Bay Industrial Development Zone (SBIDZ) supports its investors by leveraging its existing established relationships with the public and private sectors. It has established an Ease of Doing Business (EODB) division to assist its investors in navigating various hurdles and reducing red tape, thereby enabling maritime, energy, engineering, and logistics organisations to realise economic growth, business development, profitability, and prosperity.



CONTENT

1. Ease Of Doing Business Unit
3. Red Tape Reduction
15. Tax and Investment Incentives
23. Networks



EASE OF DOING BUSINESS UNIT

The Saldanha Bay Industrial Development Zone (SBIDZ) Ease of Doing Business (EODB) philosophy is to provide proactive solutions that are customer-centric for investors and service providers in the zone.

The EODB Centre is a co-working space located within the Access and Security Complex of the SBIDZ. This space has been designed to extend the services already offered by the EODB Unit into a physical location where investors can consult with the government officials and private service providers co-located in the building and available by appointment.



THE EODB CENTRE OFFERS THE FOLLOWING SERVICES:



Advisory services that supply the detailed, in-depth knowledge across several requirements (e.g., registration, licenses, permits, inspections) that businesses need to successfully start and maintain their operations.



Co-located services that provide a single location to access government assistance. These services are not integrated – they are delivered by different people working for different government departments, agencies or ministries and using different systems.



Client-centric services that offer a personalised service based on your business life cycle events (business setup and continued operations). These services address all formalities required to operate in the sectors we service.

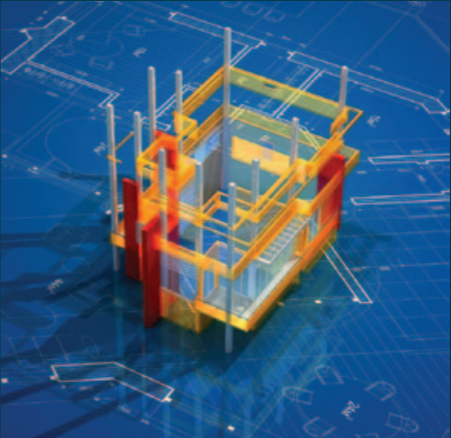
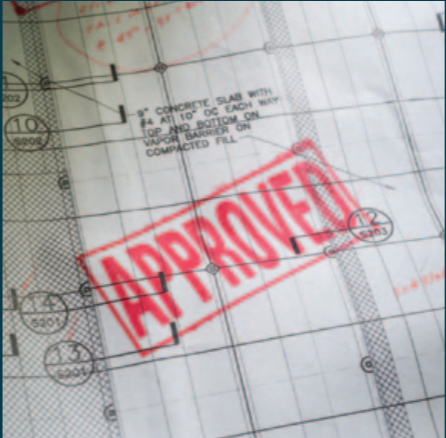
RED TAPE REDUCTION

The EODB Centre is synonymous with the term "red tape reduction". We make it easier for investors to do business with us by lessening bureaucracy and simplifying the procedures for applications, licensing and permits, which are necessary for investing in project start-ups and business continuation.

Other red tape reduction services provided by the SBIDZ include:



SPEED OF APPROVAL OF BUILDING PLANS



- Access to information on the requirements and process to submit a building plan to the local authority.
- Saldanha Bay Municipality (SBM) officials, available either in-person or virtually, can facilitate bespoke projects and requests.
- A guaranteed turnaround time when the building plan is submitted through the EODB process.

submissions for investors in the SBIDZ. The process is end-to-end, with initial meetings to outline requirements for the project facilities, as well as additional processes that may need to be followed and their timelines.

The SLA ensures a smooth process to obtaining permission for building construction to commence, as well as obtaining the Building Completion Certificate. We work closely with your appointed architect to achieve a seamless flow of paperwork and communication with the SBM.

Our EODB Unit has a Service Level Agreement (SLA) with the SBM that expedites the services of building plan

ADVISORY SERVICES ON PORT / MARINE PROCEDURES

- Access to information on the various port protocols and procedures to apply for permits and licenses.
- Transnet National Ports Authority (TNPA) officials, available either in-person or virtually, can facilitate bespoke projects and requests.

The SBIDZ is located within the port of Saldanha Bay with direct access to port marine facilities, such as berths. The SBIDZ engages with the TNPA on various platforms across different levels and functions to collaborate on and coordinate strategic and operational functions.



SUPPORT VISA AND WORK PERMIT APPLICATIONS

- Access to the different types of visas available to investors, the eligibility criteria and the application process.
- Department of Home Affairs (DHA) officials, available either in-person or virtually, can facilitate specific visa requirements.
- Access to a database of vetted private consultants who specialise in facilitating visa and immigration services.



Potential investors in the SBIDZ might require foreign nationals to enter the country for project setup and ongoing operations leading to skills transfer. The awarding of visas to foreign nationals is a process under high scrutiny due to the high unemployment rates in South Africa. That being said, SBIDZ will assist wherever possible.

The most common forms of temporary work permits/visas are:



Business visa



Corporate visa
(corporate account)



Intra-company transfer visa



Critical skills work visa



General work visa



Corporate workers visa

ADVISORY SERVICES ON LABOUR AND EMPLOYMENT

- Access to the processes and requirements for employment services, Compensation for Occupational Injuries and Diseases Act (COIDA) and Unemployment Insurance Fund (UIF).
- Department of Employment and Labour (DOEL) officials, available either in-person or virtually, can facilitate specific visa requirements.
- Access to a database of vetted private consultants who specialise in facilitating labour law and practices.





ADVISORY SERVICES ON ABNORMAL LOADS

The SBIDZ has a short-term laydown area called the Project Leasing Facility. Some of the project equipment and components stored in this facility are for hinterland projects and are abnormal or out of gauge. They need special permits to be moved on the Western Cape roads network by obtaining an abnormal loads permit.

- Access to information on the various port protocols and procedures to apply for permits.
- Department of Public Works and Transportation (DPWT) officials, available either in-person or virtually, can facilitate projects and requests.
- Access to a database of vetted private consultants who specialise in facilitating an abnormal load permit application.

GAINING ACCESS TO RAIL / ROAD / AVIATION

Transport connectivity is an important requirement for the nature of the projects found within a special economic zone (SEZ). Rail, road, sea and air connectivity are the enablers of trade and a value-add to making it easy to do business in the SBIDZ.

- Located in the port of Saldanha, giving investors access to sea transportation.
- Linkages to local and provincial roads, with upgrades that have been made in the region to connect to the Cape Town harbour and other inland locations.
- Access to nearby micro-airport for chartered flights and helicopter landings.



TAX AND INVESTMENT INCENTIVES

A suite of tax and financial incentives have been made available by the Department of Trade Industry and Competition to qualifying companies located within SEZs.

The EODB Centre assists investors with understanding and applying for these tax incentives. We offer investors the following assistance:

- Access to information on eligibility criteria, application processes and simplified procedures.
- South African Revenue Service (SARS) officials, available either in-person or virtually, can facilitate tailored projects and requests.
- Access to a database of private consultants who specialise in SEZ tax incentives.



REDUCED CORPORATE INCOME TAX RATE (S12R)



In the Income Tax Act 58 of 1962, S12R provides a preferential income tax rate of 15% for qualifying companies operating in SEZs compared to the standard rate of 28%. The SBIDZ is one of the SEZs gazetted by the Minister of Finance for access to the incentives.

This incentive is currently available until 2024 and for a period not exceeding ten years after a company is established and starts trading from its location in the SEZ.



ACCELERATED BUILDING ALLOWANCE (S12S)

In the Income Tax Act 58 of 1962, S12S provides for an accelerated depreciation allowance for erecting or improving buildings and other fixed structures for qualifying businesses operating within SEZs. The SBIDZ is one of the SEZs gazetted by the Minister of Finance for access to the incentives.

The special rate of the depreciation allowance is 10% per annum over ten years in comparison to the standard allowance of 50 years.

REDUCTION OF PAYE TAX PAYABLE (ETI)

Found in the Employment Tax Incentive Act No. 26 of 2013, this incentive reduces an employer's cost of hiring people by reducing the amount of Pay-As-You-Earn (PAYE) tax payable by the amount of the total employment tax incentive calculated in respect of all qualifying employees. No age restriction applies to an entity located in an SEZ.





CUSTOMS AND VAT BENEFITS IN A CCA WITHIN AN SEZ

If an investor has premises permanently located in a Customs Controlled Area (CCA), the investor can register as a Customs Controlled Area Enterprise (CCAIE) with SARS Customs. A CCAIE has access to Customs and value-added tax (VAT) benefits in the form of a full rebate of import duty and a VAT exemption on imported goods that remain within the SEZ or are subsequently exported.

Furthermore, the VAT Act allows for the zero-rating of movable goods supplied to a CCAIE, as well as the supply of fixed property in a CCA under specified conditions. Registration is required with SARS Customs for a CCAIE, which we assist with.



NETWORKS

EODB STAKEHOLDERS

The EODB Unit has established good and lasting relationships with key government stakeholders who contribute to our EODB offering. It is through these relationships that investors can have access to superior knowledge, updated information on legislation and advocacy for their projects.

The EODB Unit offers the following benefits:

- Acts on behalf of the investors to find systemic and innovative solutions.
- Continually identifies key stakeholders necessary for red tape reduction and who have expert knowledge.

PANEL OF PROFESSIONAL SERVICE PROVIDERS

The EODB Centre has enlisted independent private consultants who offer services that are complementary to the legislative requirements and advisory services from the public sector officials to provide additional personalised assistance with licensing, permits and application processes.

THESE INCLUDE:



TAX CONSULTANTS



LEGAL CONSULTANTS



IMMIGRATION SERVICE CONSULTANTS



TRANSPORT CONSULTANTS



LABOUR LAW CONSULTANTS

Consultants who wish to form part of the panel can do so by completing this form.





CONTACT

SALDANHA BAY OFFICE

24 Main Road, Saldanha Bay

T: +27 (0) 22 714 0206

E: eodb@sbidz.co.za

CAPE TOWN OFFICE

14th Floor, South African Reserve Bank Building,
60 St George's Mall, Cape Town, 8001

T: +27 (0) 87 095 0261

info@sbidz.co.za

www.sbidz.co.za